

PD35

Deadweight testers for High Pressure



Features

- The PD35 is electric deadweight tester with easy manipulation by actuation of switch controlling pressurization and depressurization, rotation frequency and preliminary pressurization.
- Taking dust proofing and safety into account, the deadweight section is built-in a panel.
- The amount of deadweight is displayed on a panel which can be easily monitored and manipulated.
- The ram position is detected contactless and is displayed by a lamp on a panel so that operation is not affected regardless of its pressure value.
- JCSS Calibration Certification
- NKS Inspection Certificate and Pressure standard Inspection available.

Specifications

Type	Floor type
Operating fluid	Hydraulic fluid
Operation	Electric
Pressure range	100, 200, 300MPa (0.1%O.R. is not available for 1MPa and 2MPa.)
Accuracy	±0.1% of reading (100, 200MPa) ±0.2% of reading
	Primary pressure measurement only. Secondary pressure measurement range covers lower outside range of primary pressure measurement range (10% of maximum rated pressure). Primary pressure measurement range: Range between 10% to maximum range of rated pressure Secondary pressure measurement range: Range between minimum to 10% of rated pressure
Body color	Light gray
Body weight	320kg

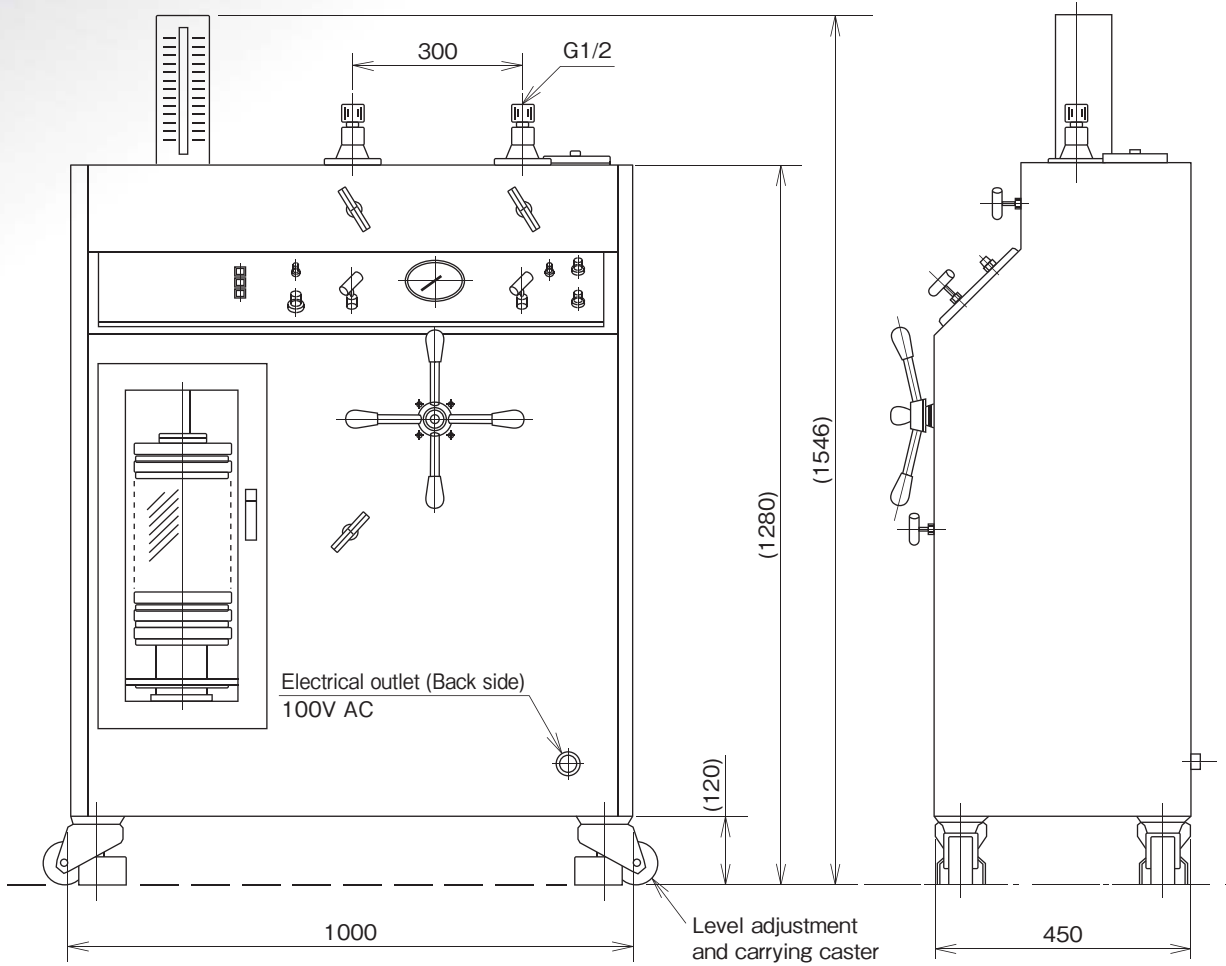
Deadweight composition

Measurement range Mpa			Effective sectional area cm ²	Deadweight Mpa								Net weight of deadweight Approx. kg	Power supply	
Max.	Min.	Smallest graduation		Piston + Spindle-shaped			Number of weights by value			Dividable deadweight				Total
				5	10	20	5	10	20	5	10			
100	5	5	1/10	1			9	5		1		105	100V AC 50/60Hz	
200	10	10	1/20		1			9	5		1	210		
300 [※]	20		1/32			1			14		1	310		

For easy transportation, PD35 deadweight is disassembled when it is shipped. Make sure to assemble by customer when in use in accordance with procedure written in instruction manual.

※0.1%O.R. is not available.

Dimensions



ACCESSORIES & OPTIONS

Model	Mounting base		Spare parts, tools, accessories								
	Connection	Connecting method	Adapter				O-ring and gasket	Piston Gasket	Wrench and other tools	Case (option)	
			G1/4	G3/8	G1/2	G3/4				Carrying case	Weight box
PD35	Adapter	Quick fastening nut	2	2	2	—	P7-40	φ8-3	Complete set	—	—

PD35

Deadweight testers for High Pressure

Model number configuration

Please specify the model number, each specs and the range for ordering.

Model

P D 3 5 — **M** **1** — **X X X** **X X X X X X X**

Deadweight type pressure standard ① ② ③ ④ ⑤ ⑥ ⑦ ⑧ ⑨ ⑩ ⑪ ⑫ ⑬ ⑭ ⑮

Model number		Product specifications		Additional specifications (Optional)	
① Units	M	MPa			
② Accuracy	0	±0.2% O.R.			
	1	±0.1% O.R. (Except 300MPa)			
(Please specify pressure range and unit of measure along with corresponding ordering code.)	④ Pressure range (MPa)	1	100		
		2	200		
		3	300 ±0.1% O.R. not available		
⑧ Pressure standard inspection / certification	1	Pressure standard inspection (Accuracy: ±0.2% O.R.)			
	3	JCSS certificate of calibration			
	4	Inspection certificate, Traceability certificate (NCSS)			
⑨ Other additional spec.	0	Not required			
	1	Required (Specify required additional specs below) Other units than "SI" (Export purpose only)			
⑮ Documents	0	Not required			
	1	Required (Documents available upon request) Datasheet (Drawing / Specifications) Instruction manual Inspection procedure Attending inspection			

[Remarks] JCSS calibration is not available for the range 300MPa.

* Specify code "X" to refer N/A

OPERATING INSTRUCTIONS

- Avoid installation in places exposed to places that excessive vibration, dirt, dust, corrosive atmosphere, and direct sunlight are present.
- Ensure to install the deadweight tester horizontally. If not installed horizontally, the test result may not be accurate.
- Do not try to increase or decrease the pressure suddenly. (Ensure to open and close the valves slowly.)
- Applying a pressure over the maximum allowable pressure on PD13 is not only dangerous but possibly damage the tester.
- The deadweights are precisely manufactured. Do not fabricate with sandpaper or drop them.
- Use a tank siphon to calibrate "Use no oil" pressure gauges and be sure that oil does not ingress into pressure gauge under test.
- Use clean hydraulic oil. Refer to the following operating oil below.

Max. pressure Operating oil

100 to 300MPa: Special oil (Specified by Nagano Keiki)

Documents

Specify "Document name" when required

Document name	Applicable document	Explanation
Additionally available traceability certificate	Certificate of calibration and inspection for pressure standard used for inspection (Copy)	Copy of certificate that pressure gauge or pressure standard used for the inspection is traceable to National Secondary Standard owned by qualified company.
	JCSS certificate of calibration (Copy)	Copy of certificate of working standard that the working standard is traceable to National Secondary Standard owned by qualified company.
	jcass test report (Copy)	Copy of certificate of National Secondary Standard that the National Secondary Standard owned by qualified company is traceable to National Standard.

Traceability Chart of Measurement Standard

