

GR__ Receiver Gauge

Overview

This receiver gauge is used for measuring pressure, flow, capacity and other types of pneumatic pressure control. Pressure sensing element with low hysteresis with high reception characteristic is available. Dial scale angle is 270° in accordance with pressure 20 to 100kPa for easy reading.

Features

- Identical design with external dimension and mounting method for easy panel mounting and installation.
- Variety of scales available depending on application.



Specifications

Media:

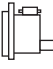
Gases

Size:

φ 100, φ 150, □ 110

Type:

Stem ·····  B type (Mounting hole)

Panel ·····  D type (Mounting clamp, Mounting hole)
Do type (Mounting clamp ·····
"□" shaped mounting clamp)

Connection:

G3/8B, Rc1/4

* Consult us for nonstandard connections.

Wetted parts:

Pressure range C5191 (φ 100, □ 110)

C6872 (φ 150)

Socket CAC203

Pressure range (Input):

20 to 100kPa

Operating temperature range:

-5 to 45°C

Accuracy:

±0.75%F.S.

Scale dial angle:

270°

Standard dial:

Pressure · Vacuum · Compound
(Equalized scale graduation)

0 to 10, 0 to 100%

(Equalized scale graduation, Square root scale)

Window:

Inorganic glass

Case material · finish:

ADC12, AC7A, ZDC2 (Varies depending on model)

Black

Blowout disc:

Blowout disc is used to protect window being blown up in case of high pressure leak happen from the failure of bourdon tube. The disc breaks and releases inner over pressure.

Caution To maintain appropriate performance, space wider than 10mm against wall behind installing gauge is needed. Modification toward disk and plug, blocking out the disk are prohibited.

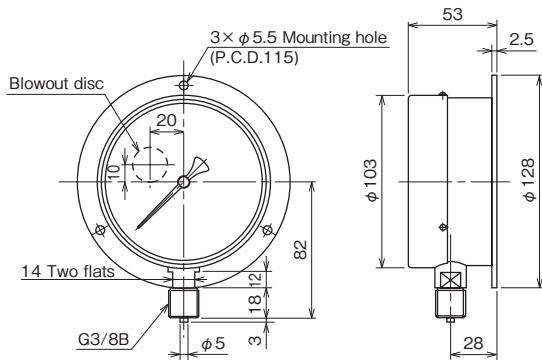
Weight:

Approx. 0.6kg to 1.6kg

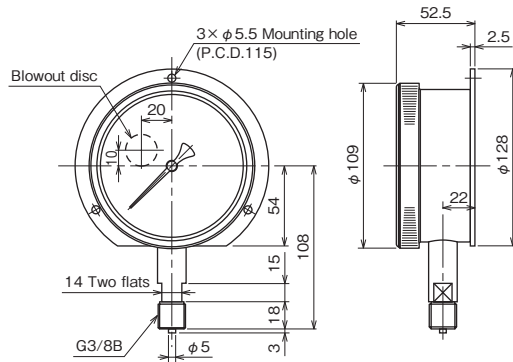
Dimensions 1

Unit: mm

φ100 Stem

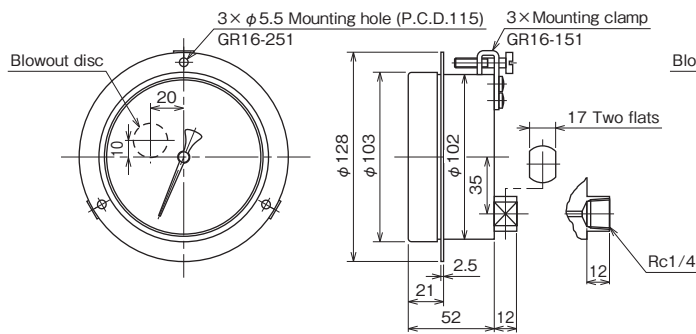


GR11-231

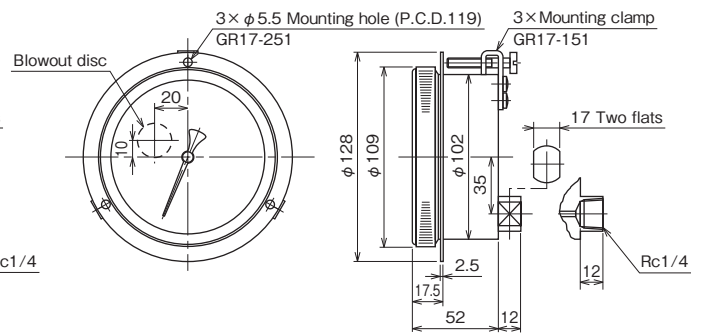


GR12-231

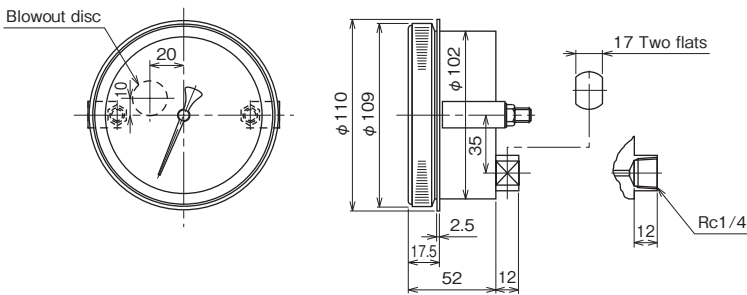
φ100 Panel



GR16-151



GR17-151

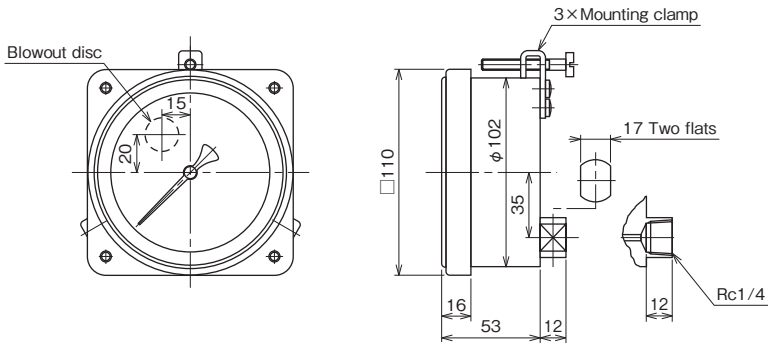


GR18-151

Dimensions 2

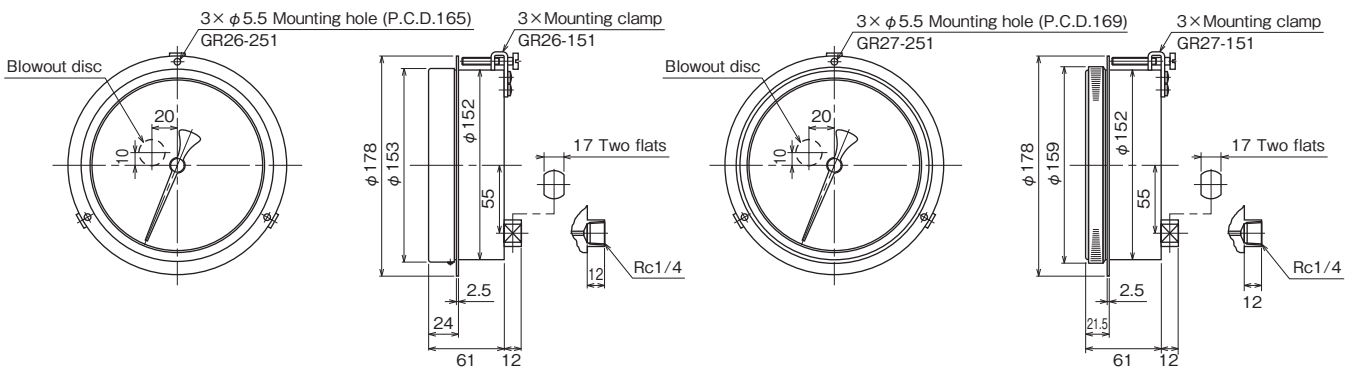
Unit: mm

□110 Panel



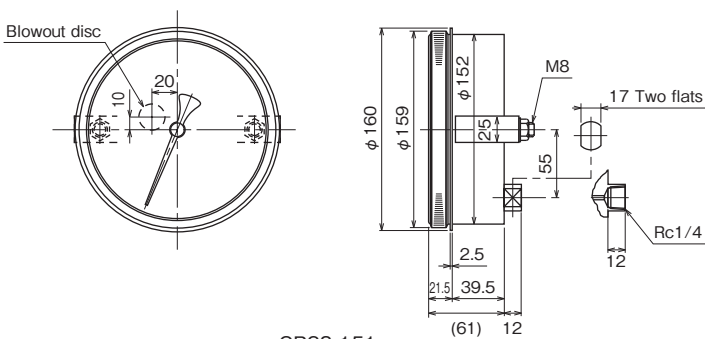
GR19-151

φ150 Panel



GR26-151

GR27-151



GR28-151

Model number configuration

Please specify the model number, each specs and the range for ordering.

Model

G R

——

Receiver Gauge ① ② ③ ④ ⑤ ⑥ ⑦ ⑧ ⑨ ⑩ ⑪ ⑫ ⑬ ⑭ ⑮

Model number			Product specifications				Additional specifications (Optional)				
Model	1	1	General use	Size	φ 100	Shape	Stem: B type	Case material	AC7A	Weight (Approx.)	0.6kg
	1	2	Sealed type	φ 100	Stem: B type	ADC12	0.8kg				
	1	6	General use	φ 100	Panel: D type	AC7A	0.6kg				
	1	7	Sealed type	φ 100	Panel: D type	ADC12	0.8kg				
	1	8	Sealed type	φ 100	Panel: Do type	ADC12	0.9kg				
	1	9	General use	□ 110	Panel: D type	ZDC2	1.1kg				
	2	6	General use	φ 150	Panel: D type	AC7A	0.9kg				
	2	7	Sealed type	φ 150	Panel: D type	AC7A	1.6kg				
	2	8	Sealed type	φ 150	Panel: Do type	AC7A	1.3kg				
① Shape			Stem		Panel						
			1 —		D type (Mounting clamp)			Do type (Only for GR18, 28)			
			2 B type		D type (Mounting hole)			GR19 not available			
			3 —		D type (Mounting bolt) Only for GR19						
② Connection			3 G3/8B								
			5 Rc1/4 Only for panel mounting								
			Others								
③ Wetted parts			1 Bourdon tube: C5191T or C6872T Socket : CAC203								
④ Pressure range				1 20 to 100kPa							
⑤ Accuracy				0 Standard (±0.75%F.S.)							
⑥ Pointer				0 Standard type							
⑦ Window				0 Inorganic glass Others							
⑧ Treatment				0 Not required 1 Use no oil 2 Use no water 3 Use no oil & water							
⑨ Other additional spec.				0 Not required 1 Required (Specify required additional spec.) Nonstandard dial Case finish							
⑮ Documents				0 Not required 1 Required (Documents available upon request) Datasheet (Drawing / Specifications) Instruction manual Inspection procedure Mill test report Calibration test report (One-part one sheet) Inspection / Traceability certificate Attending inspection							

Please specify pressure range and unit of measure along with corresponding ordering code.

[Scope of manufacturing]
 • Standard: 0 to 100%, 0 to 10 (Equalized scale graduation, Square root scale)
 Pressure • Vacuum • Compound (Equalized scale graduation)

* Specify code "X" to refer N/A