

GL30

Stainless type Low Pressure Gauge

Overview

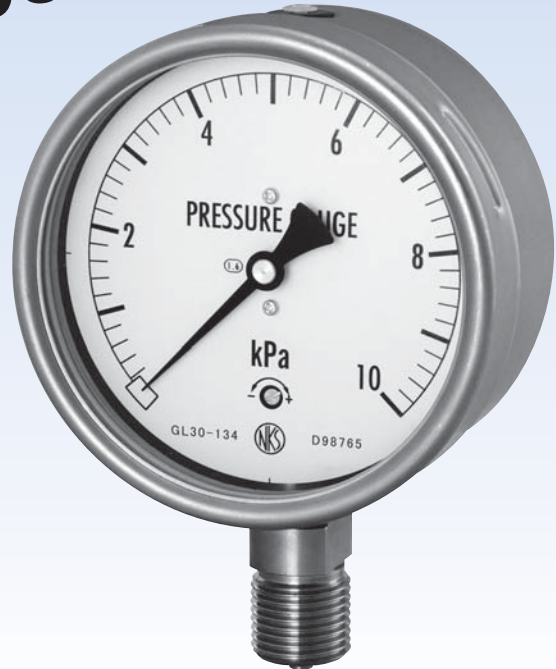
Stainless made fine pressure gauge with high accuracy and high environmental resistance. It features damage protection against instant reverse overpressure due to the open and close of valve etc.

Features

- EN837-3 compliance
- Comes standard with safety window
- Standard stainless movement
- Accuracy: $\pm 1.6\%$ F.S.
- Minimum pressure range: 0 to 2.5kPa low pressure range
- Zero adjustment possible from front side
- 7 model numbers printed on dial

※ Ingress of liquid into pressure sensing element causes low performance of instrument. Utilize air purge to intermediate air for the protection.

※ To maximize performance, select full scale pressure range as normal operating pressure range which comes to conditions 30 to 60% of rated pressure range. Also ensure the wetted parts are compatible with measured gases.



Specifications 1

Item	Description
Media	Gases
Size	$\phi 100$
Type	Stem: A type
Pressure sensing element	Capsule
Accuracy	Class 1.6 ($\pm 1.6\%$ F.S.) ※ Pulled up vent plug on the top
Case material	SUS304
Wetted parts	SUS316L
Capsule material	SUS316Ti
Connection	G3/8B, R3/8, G1/2B, R1/2, 1/2NPT
Allowable maximum pressure*1	Rated pressure : 100% of pressure range Fluctuating pressure: 95% of pressure range Overpressure : 130% of pressure range
Operating environmental temperature	-25 to 60°C (Process: 100°C)
Storage temperature range	-40 to 60°C
Window	Safety window
Enclosure rating	IP65 (IP45: Pulled up upper vent plug on the top)
Weight	Approx. 0.8kg

*1 To maintain accuracy level of 1.6 ($\pm 1.6\%$ F.S.), ensure the use within rated pressure range.
Accuracy after pressurizing over rated pressure range is specified by EN837-1 (130% of pressure range).
Accuracy after pressurizing (130% of pressure range) for 12 hours becomes $\pm 1.92\%$ F.S. (1.2 times of $\pm 1.6\%$ F.S.)

Specifications 2

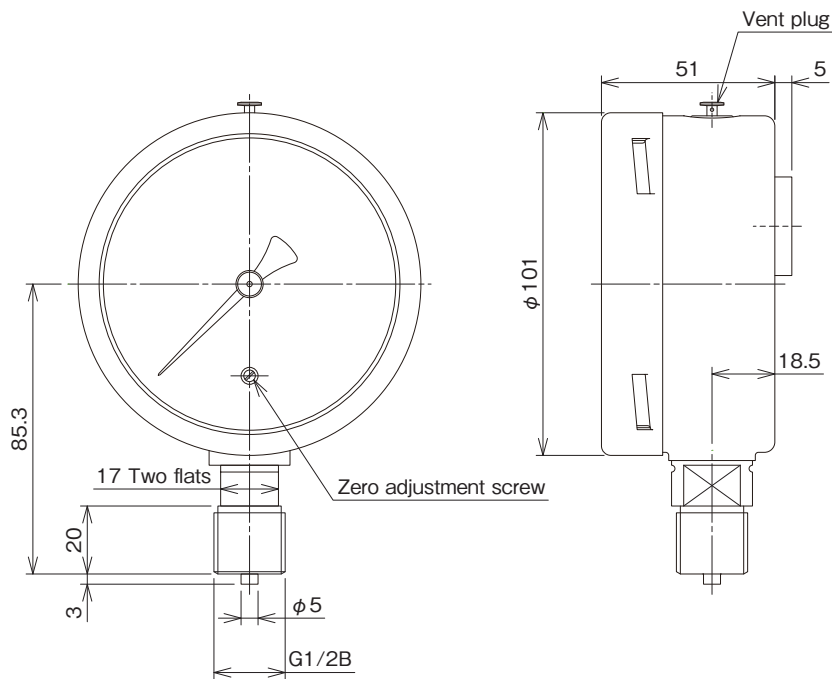
Pressure range • Minimum graduation

Positive pressure range	Pressure range kPa		Minimum graduation kPa
	Vacuum pressure range	Compound range	
0 to 2.5	-2.5 to 0	—	0.05
0 to 4	-4 to 0	-2 to 2	0.1
0 to 10	-10 to 0	-5 to 5	0.2
0 to 25	-25 to 0	-12.5 to 12.5	0.5

※Features instant reverse pressure (full scale) protection

Dimensions

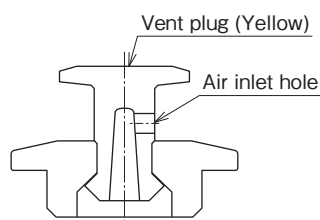
Unit: mm



※Pressure connection: For G1/2B

About vent plug

Pressure measurement with vent plug remained closed could generate inner pressure change.
Ensure to pull up yellow vent plug on the top with vent hole to let in air.



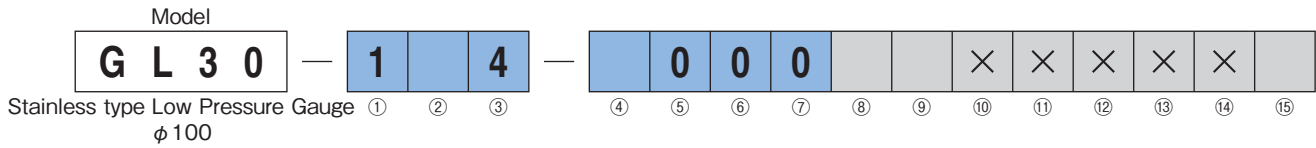
When in use

GL30

Stainless type Low Pressure Gauge

Model number configuration

Please specify the model number, each specs and the range for ordering.



Model number		Product specifications	Additional specifications (Optional)
① Type	1	A type Stem	
② Connection	3	G3/8B	
	4	G1/2B	
	8	R3/8	
	9	R1/2	
	6	1/2NPT	
③ Wetted parts	4	Socket : SUS316L Capsule: SUS316Ti	
④ Pressure range (kPa)	1	0 to 2.5	
	2	0 to 4	
	3	0 to 10	
	4	0 to 25	
	5	-2.5 to 0	
	6	-4 to 0	
	7	-10 to 0	
	8	-25 to 0	
	A	-2 to 2	
B	-5 to 5		
C	-12.5 to 12.5		
⑤ Accuracy	0	±1.6%F.S.	
⑥ Pointer	0	Standard	
⑦ Window	0	Safety window (Standard)	
⑧ Treatment	0	Not required	
	1	Use no oil	
	2	Use no water	
	3	Use no oil & water	
⑨ Other additional spec.	0	Not required	
	1	Required (Documents available upon request) Custom dial*1	
⑮ Documents*2	0	Not required	
	1	Required (Documents available upon request) Datasheet (Drawing / Specifications) Instruction manual Inspection procedure Mill test report Calibration test report (One-part one sheet) Inspection / Traceability certificate Strength calculation sheet Attending inspection	

Please specify pressure range and unit of measure along with corresponding ordering code.

[Scope of manufacturing]

* 1 Custom dial: tag number, custom characters, circled and colored line

* 2 Ask for the price when mil test report is needed (Price is provided upon request)

* Specify code "X" to refer N/A