

# GH\_\_

## High Pressure Gauges

### Overview

This is a pressure gauge for high pressure application, exceeding a range of 100MPa.

Easy pressure reading is possible and simple handling is assured.

### Features

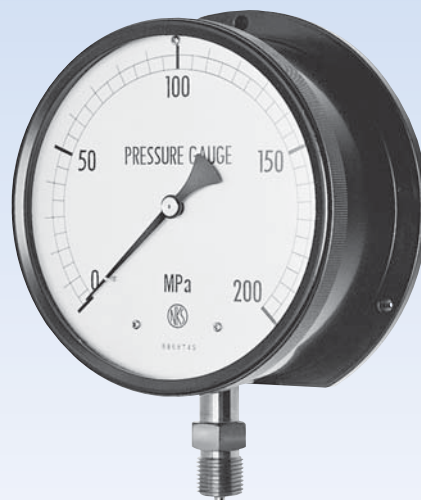
- This pressure gauge is applicable for the high pressure measuring in a range of 150MPa to 700MPa
- In the event of burst of pressure sensing element damage, enclosure assures safety construction that pressure is released from back side.
- Pressure sensing element and socket utilize high-tensile steel to withstand high pressure measurement with high accuracy.
- This pressure gauge can be applied to air pressure, hydraulic pressure, chemical industry and other high pressure measuring.

\*To maximize performance, select full scale pressure range to indicate normal operating pressure which comes to conditions below.

For constant pressure: The maximum operating pressure should not exceed one-half the full-scale range.

For fluctuating pressure, installment pressure valve is recommended to adjust at slight pointer fluctuation.

Select appropriate wetted parts compatible with process fluid (gas and liquid) which the gauge will be subjected.



### Specifications

#### Media:

Gas or liquid\*

\*For the pressure range 300MPa and above, high-tensile steel is utilized for wetted parts. When process media includes water (or moisture), strength of wetted material is weakened due to hydrogen brittleness. Avoid that situation.

#### Size:

φ150, φ200

#### Mounting:

Stem·····  Type B (Mounting hole)

Panel·····  Type D (Mounting hole)

#### Connection:

G1/2B, G1/2 female

※ Consult us for nonstandard connection.

#### Wetted parts:

Socket SUS316L or high-tensile steel  
(Depending on range)

Element SUS316L or high-tensile steel  
(Depending on range)

#### Pressure range:

0 to 150→0 to 700MPa

#### Operating temperature range:

-5 to 45°C

#### Accuracy:

±1.5%F.S. or ±2.0%F.S. (Depending on range)

#### Scale angle:

230° or 270° (Depending on range)

#### Case material • finishing:

AC7A • Black

#### Treatment: (Optional)

Use no water·····Water used in manufacturing the gauges had been flushed out & no water residue remained inside its wetted parts.

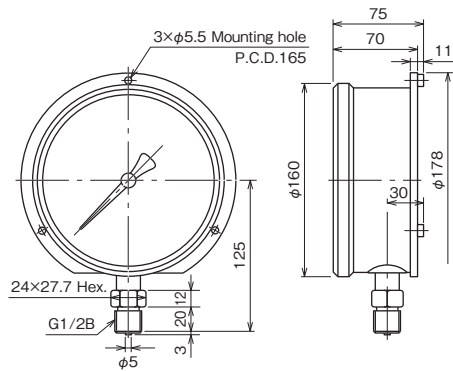
#### Accuracy • Scale angle • Wetted parts:

| Pressure range<br>MPa                  | Accuracy<br>%F.S. | Scale<br>angle | Wetted parts          |                       |
|--|-------------------|----------------|-----------------------|-----------------------|
|  |                   |                | Element               | Socket                |
| 0 to 150<br>to 200                     | ±1.5              | 270°           | SUS316                | SUS316                |
| 0 to 300<br>to 400<br>to 500<br>to 600 | ±2                | 230°           | high-tensile<br>steel | high-tensile<br>steel |
| 0 to 700                               |                   |                |                       |                       |

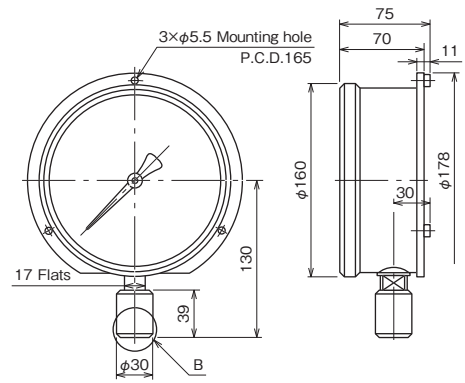
### Dimensions 1

Unit: mm

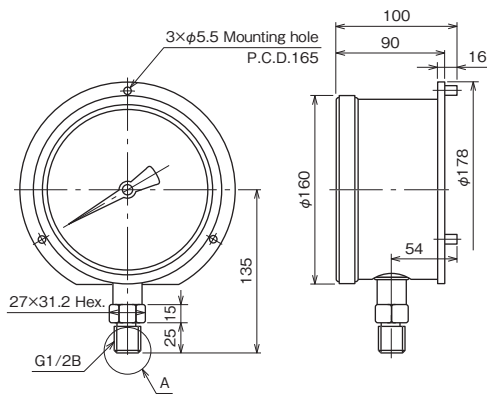
#### φ150 Stem



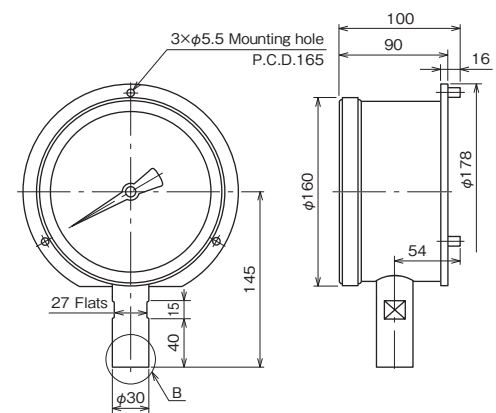
GH21-241



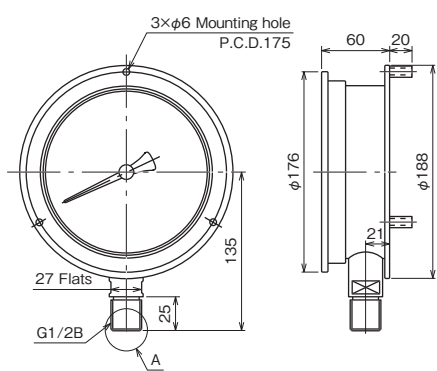
GH21-2R1



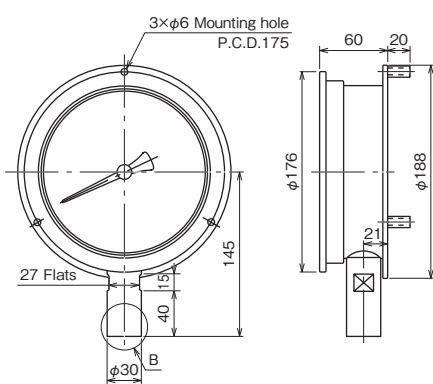
GH22-241



GH22-2R1



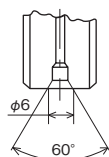
GH23-241



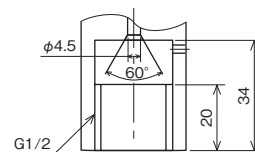
GH23-2R1

#### [Detail of connection]

A part



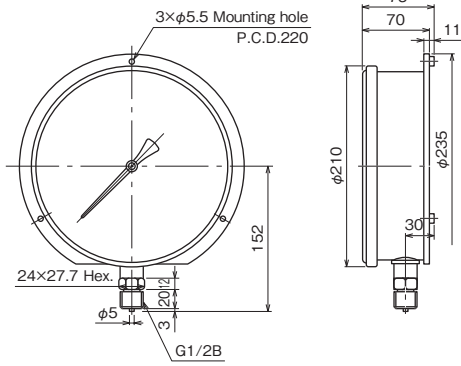
B part



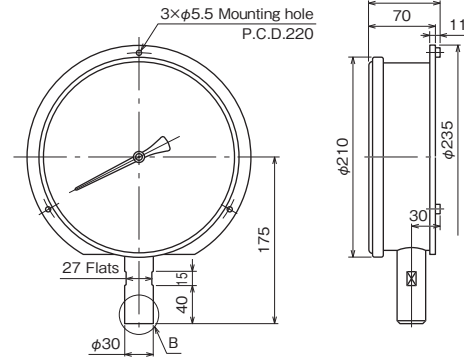
### Dimensions 2

Unit: mm

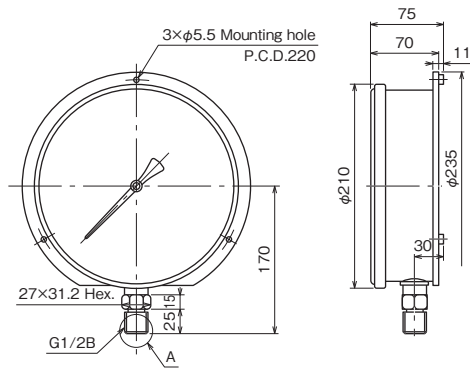
#### φ200 Stem



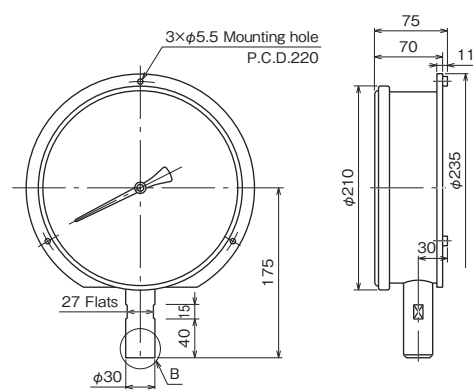
GH31-241



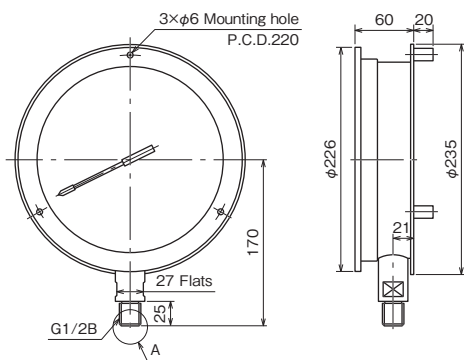
GH31-2R1



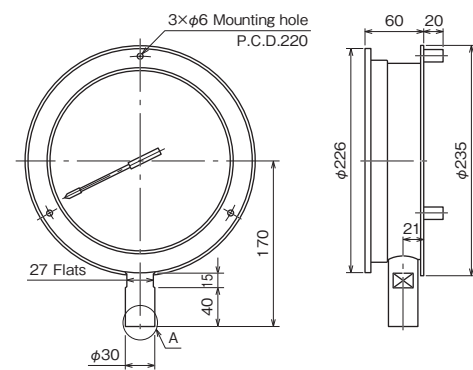
GH32-241



GH32-2R1



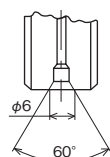
GH33-241



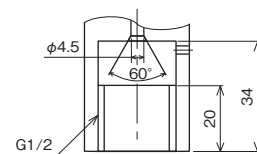
GH33-2R1

#### [Detail of connection]

A part



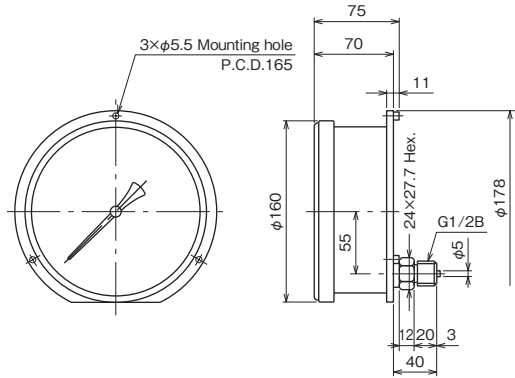
B part



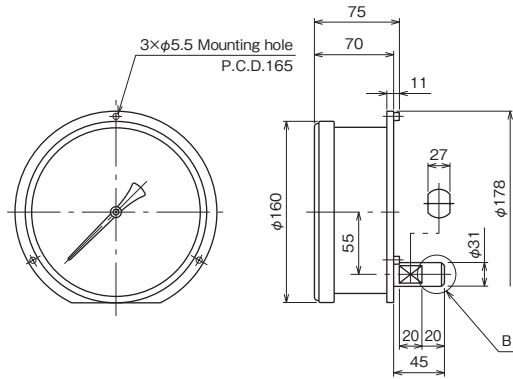
### Dimensions 3

Unit: mm

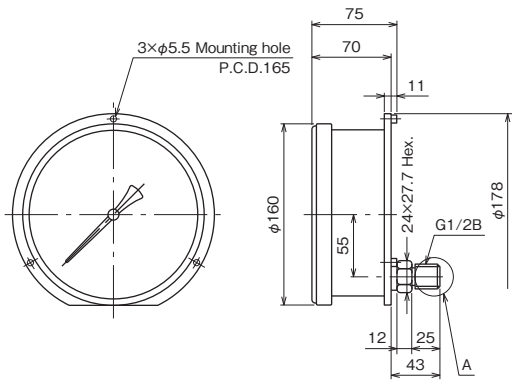
#### φ150 Back connection



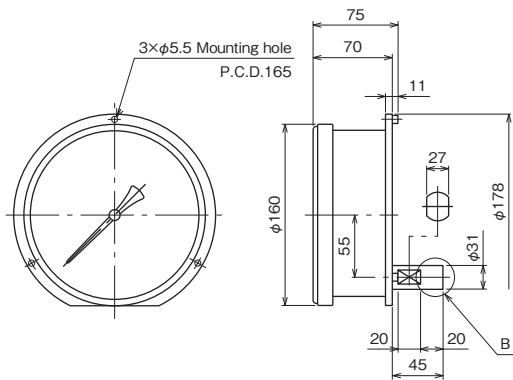
GH26-241



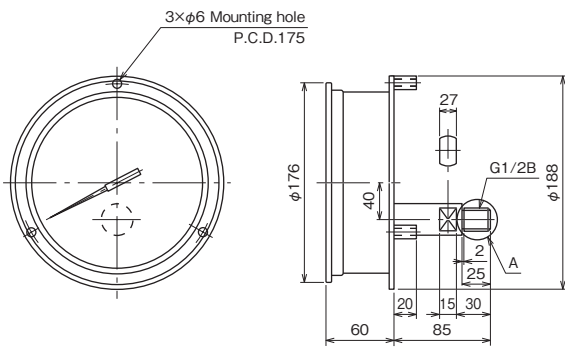
GH26-2R1



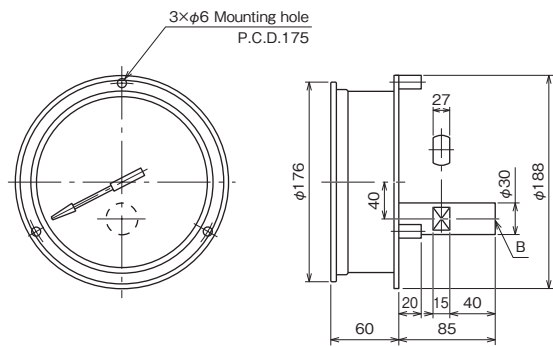
GH27-241



GH27-2R1



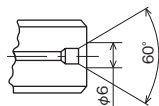
GH28-241



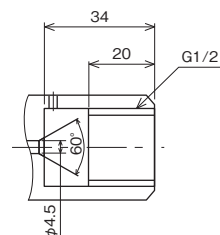
GH28-2R1

#### [Detail of connection]

A part



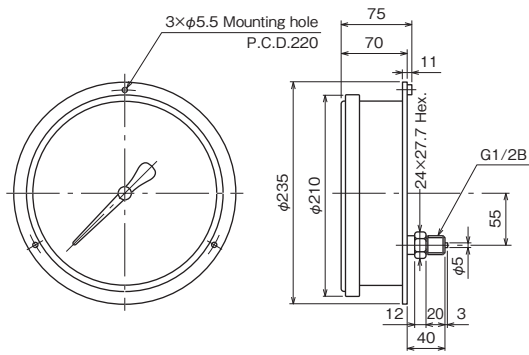
B part



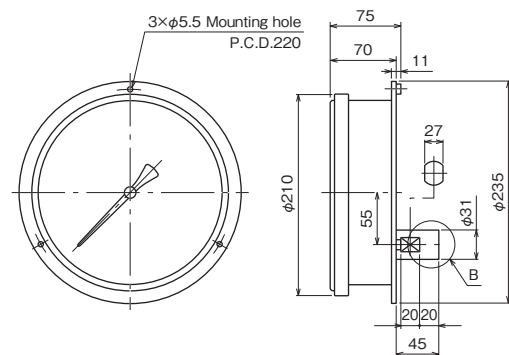
### Dimensions 4

Unit: mm

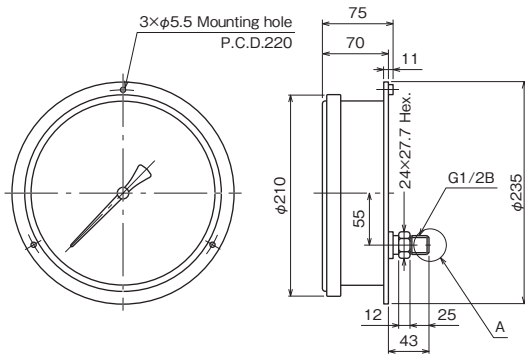
#### φ200 Back connection



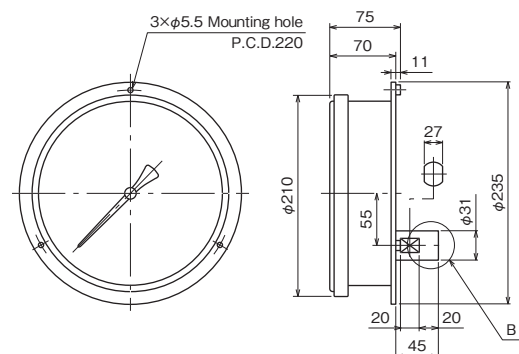
GH36-241



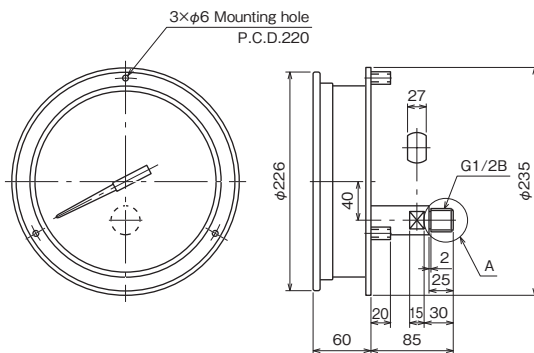
GH36-2R1



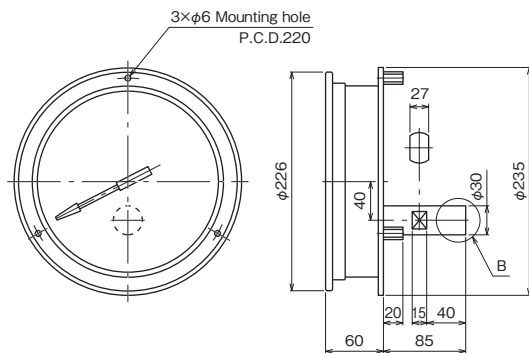
GH37-241



GH37-2R1



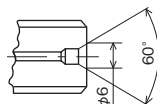
GH38-241



GH38-2R1

#### [Detail of connection]

A part



B part

