

BR12

Wireless Pressure Gauge

Outline

This product is incorporated a pressure sensor, Bluetooth® communication module and coin battery built into the mechanical pressure gauge. No wiring work is required. Pressure values can be monitored and managed on a smartphone or tablet.

Features

- Replaceable for current pressure gauge without anywiring. (Pressure sensor and communication module are battery-powered).
- Data can be saved in CSV format for statistical maintenance and management of equipment.
- Pressure values can be read on-site even when communication is disconnected (The indicated value on the pressure gauge is separated functionally.)

* The Bluetooth® word mark and logos are registered trademarks owned by Bluetooth SIG, Inc.



RoHS

Mechanical pressure gauge with incorporated Bluetooth® + pressure sensor

Pressure values can be collected and monitored using a smartphone or tablet!

* The dedicated app "PG-Link" is required.
Please download it from the App Store or Google Play.



BR12

Wireless Pressure Gauge

Specification

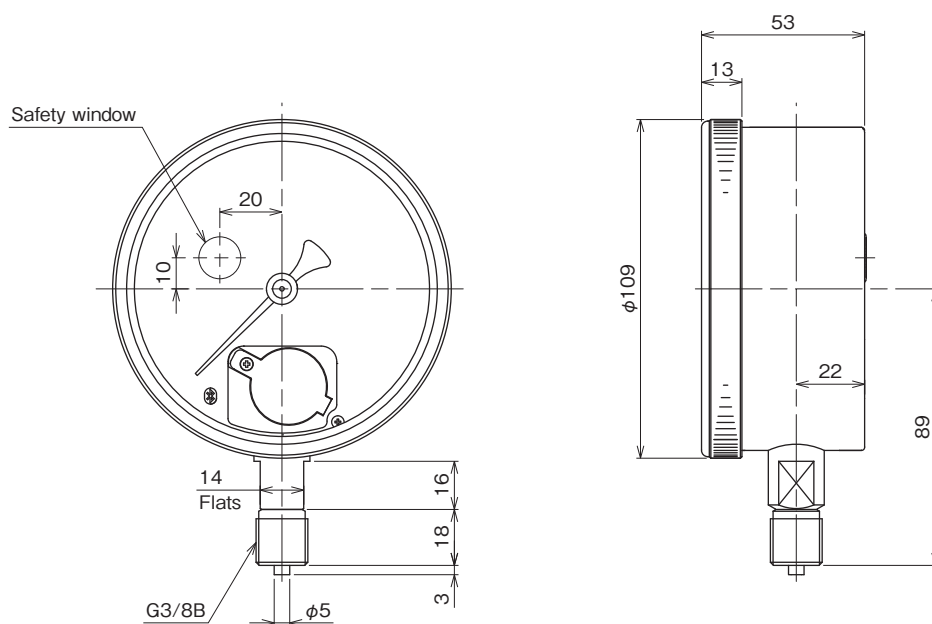
Item	Descriptions
Model number	BR12
Size	φ 100
Case construction and material	Indoor type (No condensation), Aluminum alloy
Pressure range	0 to 0.4MPa → 0 to 5MPa, -0.1 to 0.3MPa → -0.1 to 2MPa (13 types)
Connection	G3/8B, R3/8, G1/2B, R1/2
Accuracy class ^{*1}	Pressure indication: 1.0 ^{*2} , Pressure sensor: 1.6
Operating temperature	-5 to 45°C
Wetted material	SUS316, SUS630
Communication system	Bluetooth®4.2
Communication distance	Within 10 m (without obstacles)
Power supply	Coin battery (CR2032)
Battery life	2 years (2 inspections per day)
Receiving hardware	Smartphones and tablets (iOS 15 and later, Android 9 and later)
Receiving software	PG-Link
RoHS directive	Compliant
Weight	Approx. 0.8 kg

*1: Based on JIS B 7505-1.

*2: For diaphragm type, the accuracy class is 1.6. (There is no change in the accuracy class of the pressure sensor.)

Dimensions

Unit: mm



BR12-133

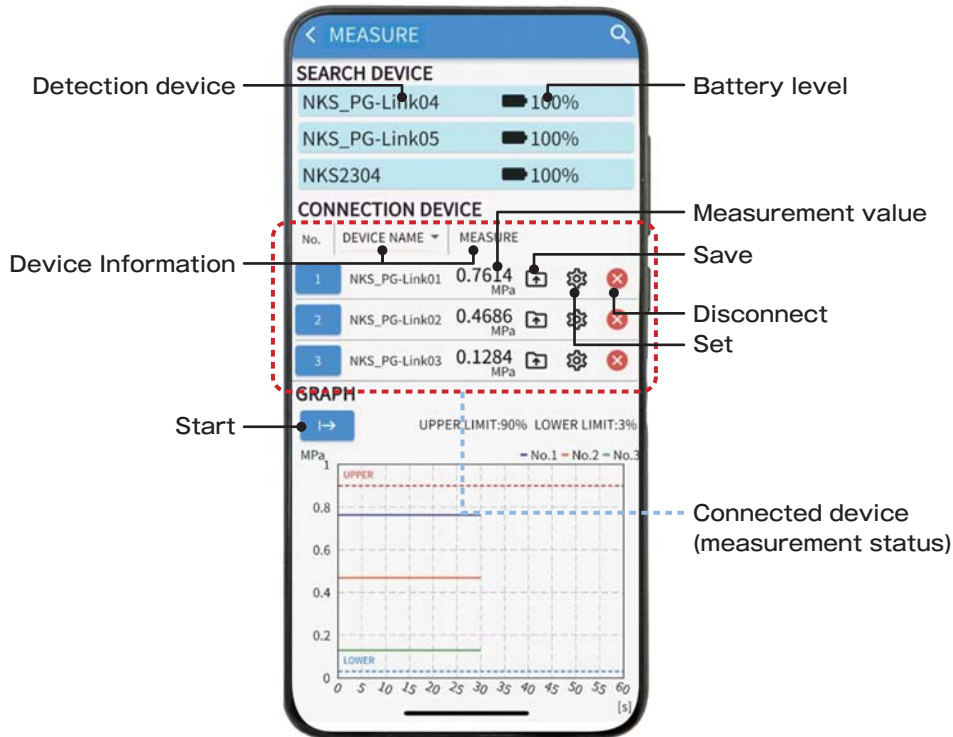
Application screen and functions (measurement mode)



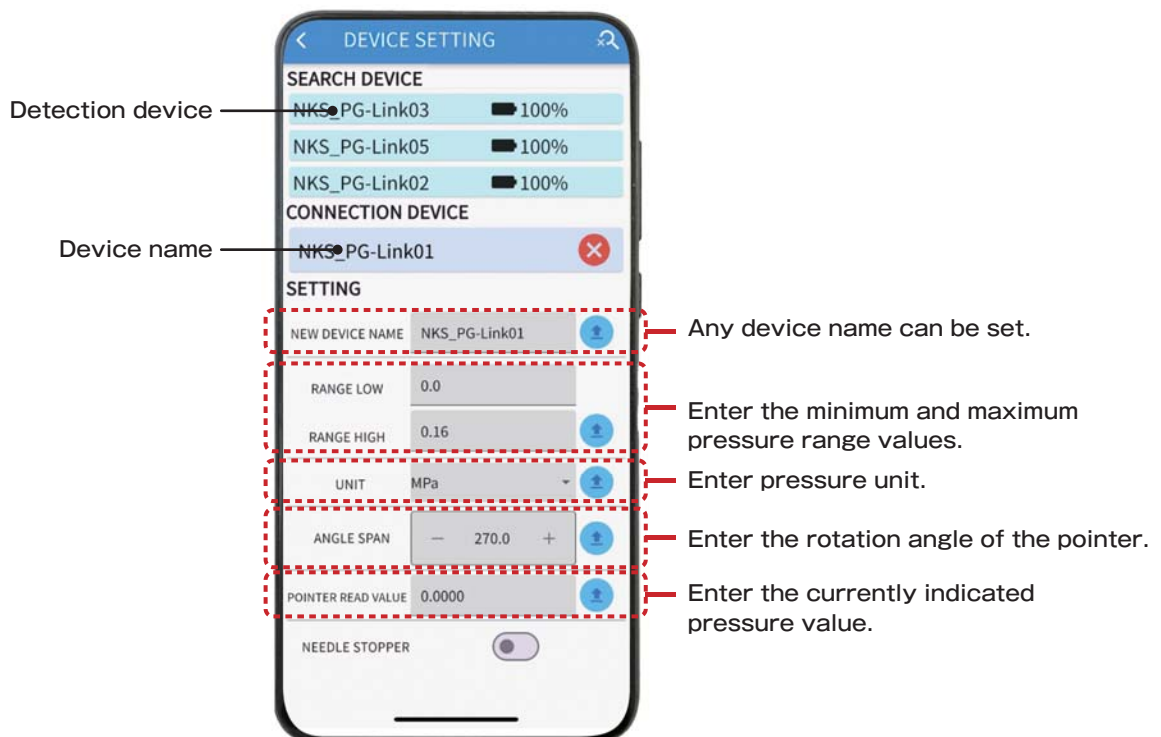
Dedicated application "PG-Link" (Please download from App Store or Google Play.)
Compatible with both iOS and Android

* Operation confirmed device: Pixel 6, Xperia 10 IV, LAVIE Tab E

■ Measurement mode



■ Setting mode



* Please note that the application screen above is based on the smartphone screen. Tablet screen may look different.

BR12

Wireless Pressure Gauge

Model number configuration

For ordering, please specify the model number, each specs and the range.

Model
B R 1 2 — **1** **3** — **3** **2** — × × × ×

Wireless Pressure Gauge

Model number		Selective spec.		Additional spec. (Option)	
① Shape	1	A frame			
② Connection	3	G3/8B			
	4	G1/2B			
	8	R3/8			
	9	R1/2			
③ Wetted parts material	3	Bourdon tube: SUS316 Pressure sensor: SUS630 Connecting part: SUS316			
④ Pressure range (MPa)	2	-0.1 to 0.3			
	3	-0.1 to 0.4			
	4	-0.1 to 0.6			
	5	-0.1 to 1			
	6	-0.1 to 1.6			
	7	-0.1 to 2			
	E	0 to 0.4			
	F	0 to 0.6			
	G	0 to 1			
	H	0 to 1.6			
	J	0 to 2.5			
	K	0 to 4			
L	0 to 5				
⑤ Accuracy class	3	Pressure indication: 1.0 Pressure sensor: 1.6			
⑥ Pointer	2	Zero adjustable (spring type)			
⑦ Glass	0	Standard inorganic glass			
	1	Organic glass			
	2	Tempered glass			
	3	Non-glare glass			
	6	Anti-frost coated glass			
⑧ Treatment	0	Nil			
	1	Use no oil			
	2	Use no water			
	3	Use no oil & water			
⑨ Throttle	0	Nil			
	1	Required			
⑩ Other additional spec.	0	Nil			
	1	Required · Gauge No., printed words · Case color			
⑮ Document	0	Nil			
	1	Required (Please specify the desired documents separately.) Spec sheet, instruction manual, inspection procedure, mill sheet, test report (1 pc 1 copy), inspection / traceability certificate*, witnessed inspection			

- * Diaphragm type also available. Please contact us for diaphragm type specifications.
- * Test report includes information on both the pressure gauge and the pressure sensor.

[Cautions]
 • About JCSS calibration
 JCSS calibration is only available for pressure indication. Therefore, a copy of the JCSS calibration certificate, which is an additional document to the traceability certificate, can only be issued for pressure indication.

*1 Only available for pressure indication.

* Specify "X" if there is no applicable item.